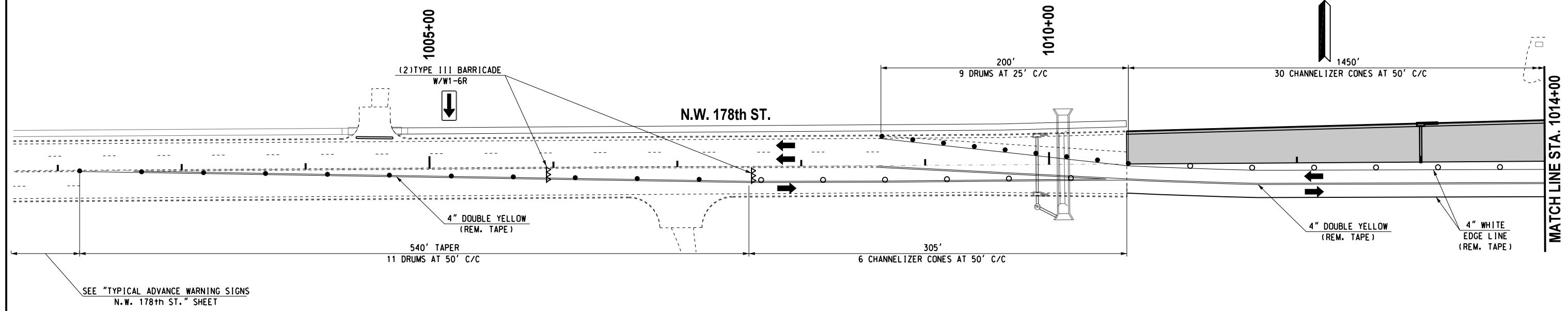
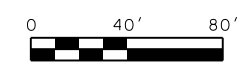
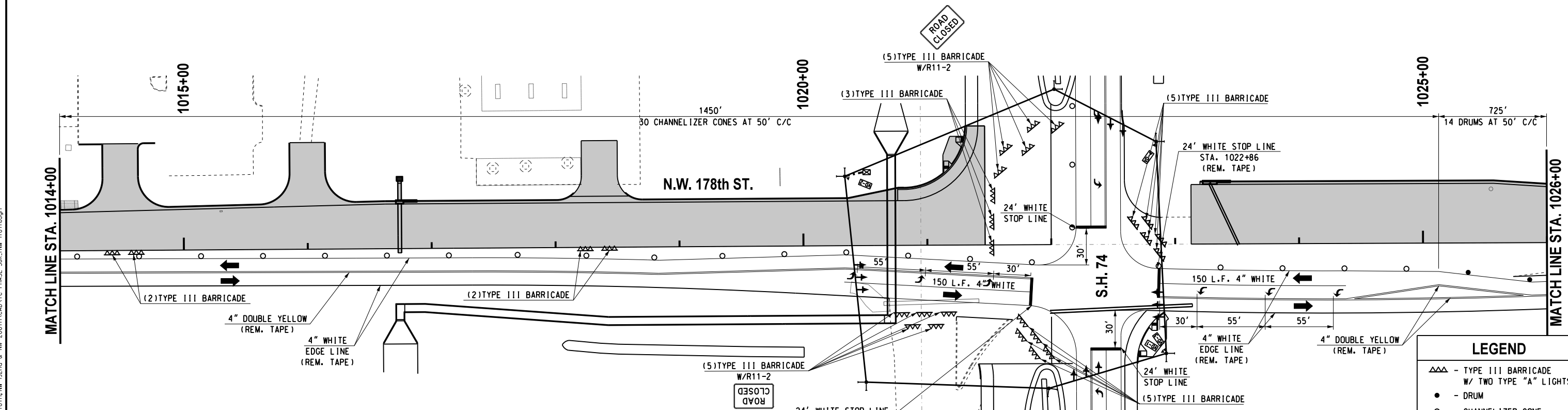


REVISIONS		
NO.	DESCRIPTION	DATE



SEE "TYPICAL ADVANCE WARNING SIGNS
N.W. 178th ST." SHEET



ALL PAVEMENT MARKINGS
SHALL BE REMOVABLE
TAPE

CONTRACTOR SHALL KEEP
11' MINIMUM LANES UNLESS
OTHERWISE NOTED.

CONTRACTOR TO PROVIDE
ACCESS TO ALL DRIVEWAYS
DURING CONSTRUCTION.

LEGEND	
△△△	- TYPE III BARRICADE W/ TWO TYPE "A" LIGHTS
●	- DRUM
○	- CHANNELIZER CONE
▬	- PORTABLE CONC. BARRIER WALL
▬▬▬	- CONSTRUCTION ZONE IMPACT ATTENUATOR
■	- WORK AREA

Design	RWR	08/10/17
Drawn	GDB	08/10/17



TRAFFIC CONTROL
PHASES 3J & K (SHEET 1 OF 2)
N.W. 178th ST.
State Job No. 14964(08) Sheet No. T68
OKLAHOMA COUNTY

08/10/17 G:\Projects\T-16628 SH 74 @ NW 178th, NW 192nd & NW 206th\CAD\TC PHASE 3J,K,NW 178th.dgn